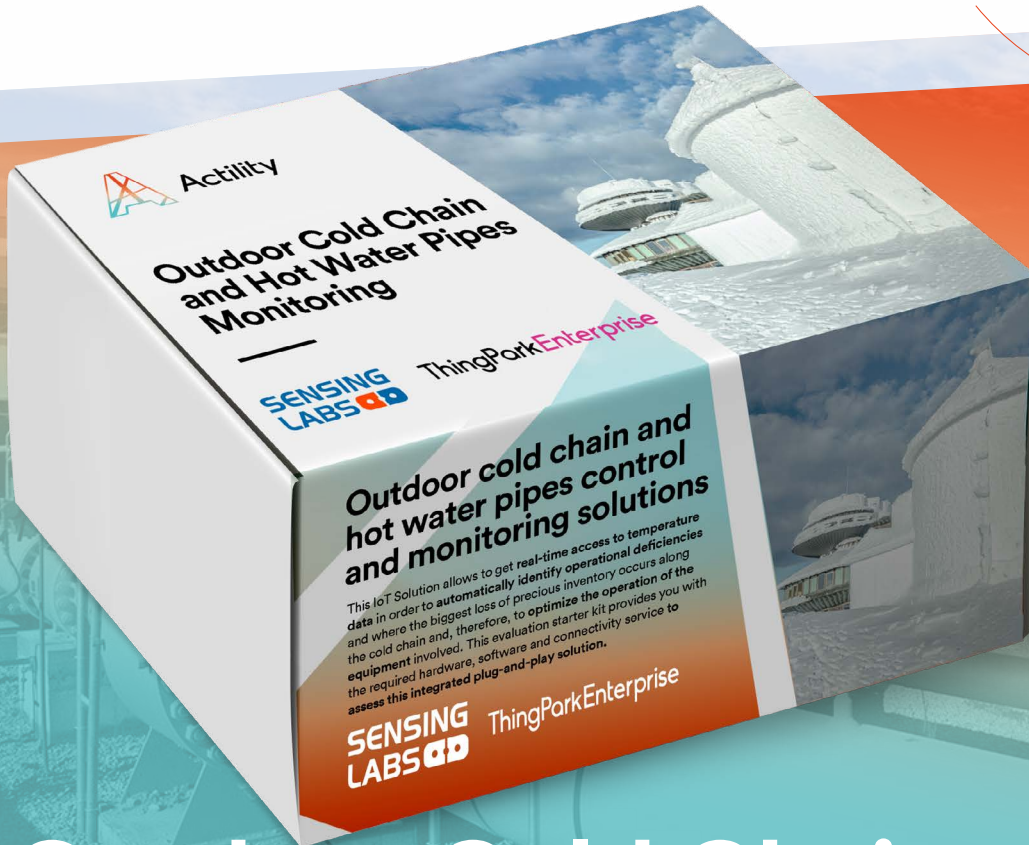


ThingPark IoT Solutions



Outdoor Cold Chain and Hot Water Pipes Monitoring

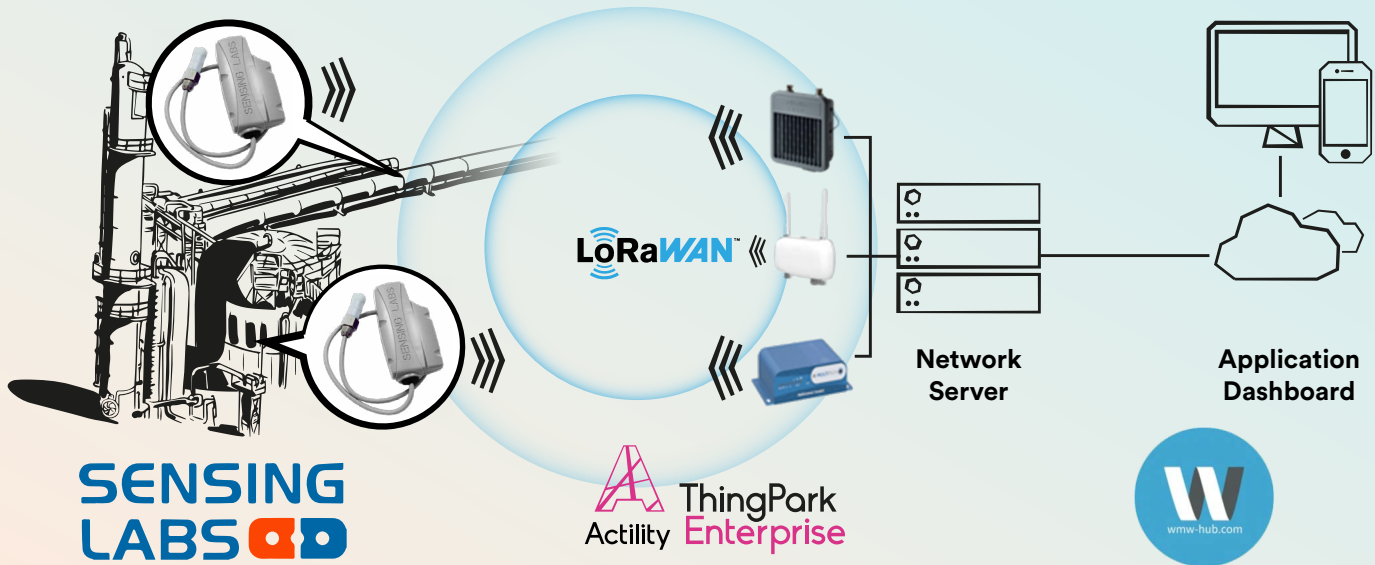
The turnkey IoT solution to monitor your assets and prevent them from being damaged when the temperature is out of range.

This IoT Solution allows to get **real-time access to temperature data** in order to **automatically identify operational deficiencies** and where the biggest loss of precious inventory occurs along the cold chain and, therefore, to **optimize the operation of the equipment** involved. This evaluation starter kit provides you with the required hardware, software and connectivity service to **assess this integrated plug-and-play solution**.



Activity

Avoid Cold Chain failures with automated temperature monitoring solution and LoRaWAN®:



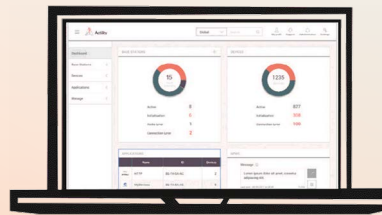
SenLab TEM-LAB-14NS



Description:

These devices measure temperatures from -45°C to $+125^{\circ}\text{C}$, with high precision probe(s) ($\pm 0.5^{\circ}\text{C}$ from -10°C to $+85^{\circ}\text{C}$, $\pm 2^{\circ}\text{C}$ else). Designed for outdoor use, Senlab™ T offers a ruggedized IP68 casing which enables reliable wireless connectivity for continuous temperature monitoring in harsh environments.

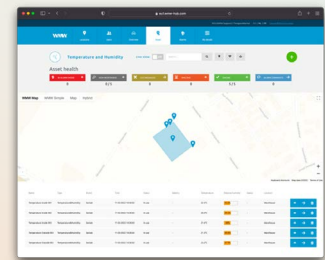
ThingPark Enterprise LoRaWAN® connectivity infrastructure by Activity



Description:

Dependable connectivity infrastructure with a proficient UX to easily build a LoRaWAN® network, Cloud-based or On Premises, using pre-integrated high-end Base Stations & an advanced Activity Network Server with dashboards providing key operational insights on the network & alarm management.

WMW Hub Application for data processing and analysis

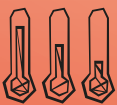


Description:

WMW offers an applicative dashboard that lets a user visualize and take actions based on collected data. Its primary intention is to provide information about greenhouses and indoor animal farming temperatures. This version of WMW offers diverse features such as device management, temperature monitoring, historical temperature data, and a ruling system to set and receive alarms.



Identify operational deficiencies with your temperature-sensitive assets with real-time temperature data.



Act quickly on cold chain faults and achieve global costs savings and regulatory compliance with an easy-to-install solution.



Keep track of logs and access to data history, define and measure service targets to be achieved using key performance indicators (KPI).



Key features:



Actionable Dashboard with Instant Alerts: Real-time monitoring, measuring, recording, and alerting on temperature readings, with meaningful insights to make data-driven decisions.



Flexibility and process autonomy: The application allows to visualize, edit and add customized notification conditions and rules for immediate data processing. Set sensor reading threshold and configure alert settings as per your business requirements.



Low-Power: Leverage LoRaWAN® technology, optimize assets energy consumption and lower your operational costs



Easy usage: Available as on-premises & cloud-based application. Manage your installation from one single application dashboard with easy accessibility, usability, management & control.



Data-driven management: Data is continuously ingested and analyzed to provide relevant reports and alerts, making sure to drive your maintenance operations based on data.

Use cases:

This end-to-end IoT Solution requires zero infra, zero cabling, and zero configuration and provides logistics, transport, restaurants, hospitals, and other companies with the required hardware and software to automate temperature readings of their outdoor assets at all stages of the cold chain. If there is a problem with the asset or the facility, such as a too high or too low temperature, the maintenance manager receives an immediate alert. He can react before these temperature variations lead to risks related to non-confirmed temperatures.



Pipe Monitoring

Supply chain monitoring

Fridge & tank monitoring

Road temperature

Build your IoT Solution with us!

Get your starter kit on ThingPark Market, or contact Actility to learn more

