

ThingPark IoT Solutions



Waste Management and Optimization

The turnkey IoT solution to monitor waste fill level and optimize its management

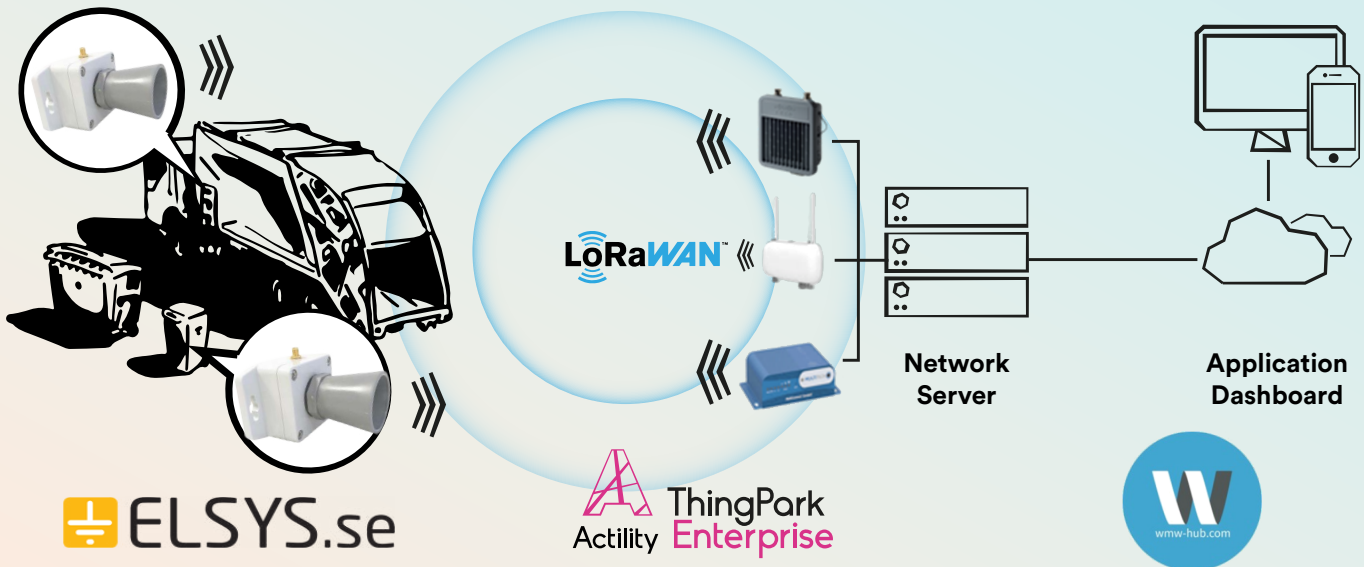
Waste management executives are frustrated when it comes to relying on waste management systems. Managing the moving waste crew is a challenging job. It is necessary to ensure smart scheduling as per their availability and location. The information from the waste industry is very useful to determine future decisions and design tentative schedules if utilized, managed, and stored properly with cloud waste management software.

Activity IoT starter kit provides you with the required hardware and software to assess a waste management solution.

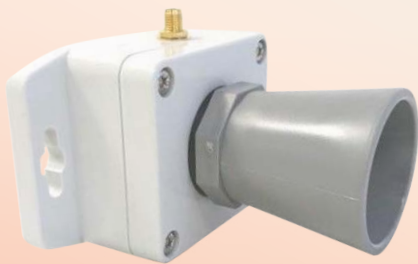


Activity

Avoid excessive garbage levels and optimize its collection by using an automated solution:



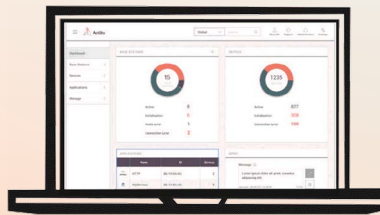
Elsys ELT Ultrasonic



Description:

Enclosed in an IP67 box and designed to be mounted outside, ELT Ultrasonic is the ideal wireless sensor for measuring in advanced places or extreme weather conditions and has the capacity of measuring distance with a remarkably long range. Distance report is leveraged by temperature, humidity, and atmospheric pressure data.

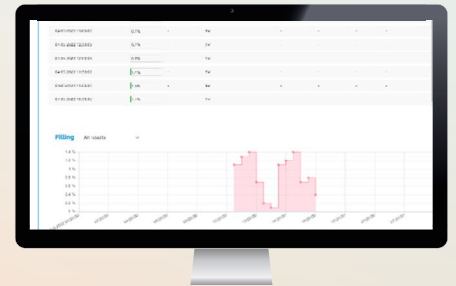
ThingPark Enterprise LoRaWAN® connectivity infrastructure by Activity



Description:

Dependable connectivity infrastructure with a proficient UX to easily build a LoRaWAN® network, Cloud-based or On Premises, using pre-integrated high-end Base Stations & an advanced Activity Network Server with dashboards providing key operational insights on the network & alarm management.

WMW Hub Application for data processing and analysis



Description:

Intuitive web and mobile application with all the essential built-in features to monitor waste bin fillings and status, with real-time message updates. The application can be combined with additional +180 different ones to create a full industrial monitoring suite.



Identify waste levels excess with accurate and repeatable distance measurement.



Act quickly when levels get out of range and achieve global cost savings with an easy-to-install solution.



Keep track of logs and access to data history, define and measure service targets to be achieved using key performance indicators (KPI).



Key features:



Actionable Dashboard with Instant Alerts: Real-time monitoring, measuring, recording, and alerting on waste fill level, with meaningful insights to make data-driven decisions.



Flexibility and process autonomy: The application allows visualizing, editing and adding customized notification conditions and rules for immediate data processing. Set sensor reading threshold and configure alert settings as per your business requirements.



Low-Power: Leverage LoRaWAN® technology, optimize assets energy consumption and lower your operational costs.



Easy usage: Available as on-premises & cloud-based application. Manage your installation from one single application dashboard with easy accessibility, usability, management & control.



Data-driven management - Data is continuously ingested and analyzed to provide relevant reports and alerts, making sure to drive your maintenance operations based on data.

Use cases:

What is the ideal way to boost up your waste management processes? Switch to IoT and enable digital transformation. The waste management solution includes a mobile working application to simplify real-time reporting to the crew, reports for service desk scheduling to streamline collection requests, and container management. All in one.



Build your IoT Solution with us!

Get your starter kit on ThingPark Market, or contact Actility to learn more

