

Activity
Connecting with intelligence

ThingPark Network Coverage (TNC) webinar

January 2025



Agenda

- Quick overview
- TNC demo
- Try it out
- Q&A



Overview

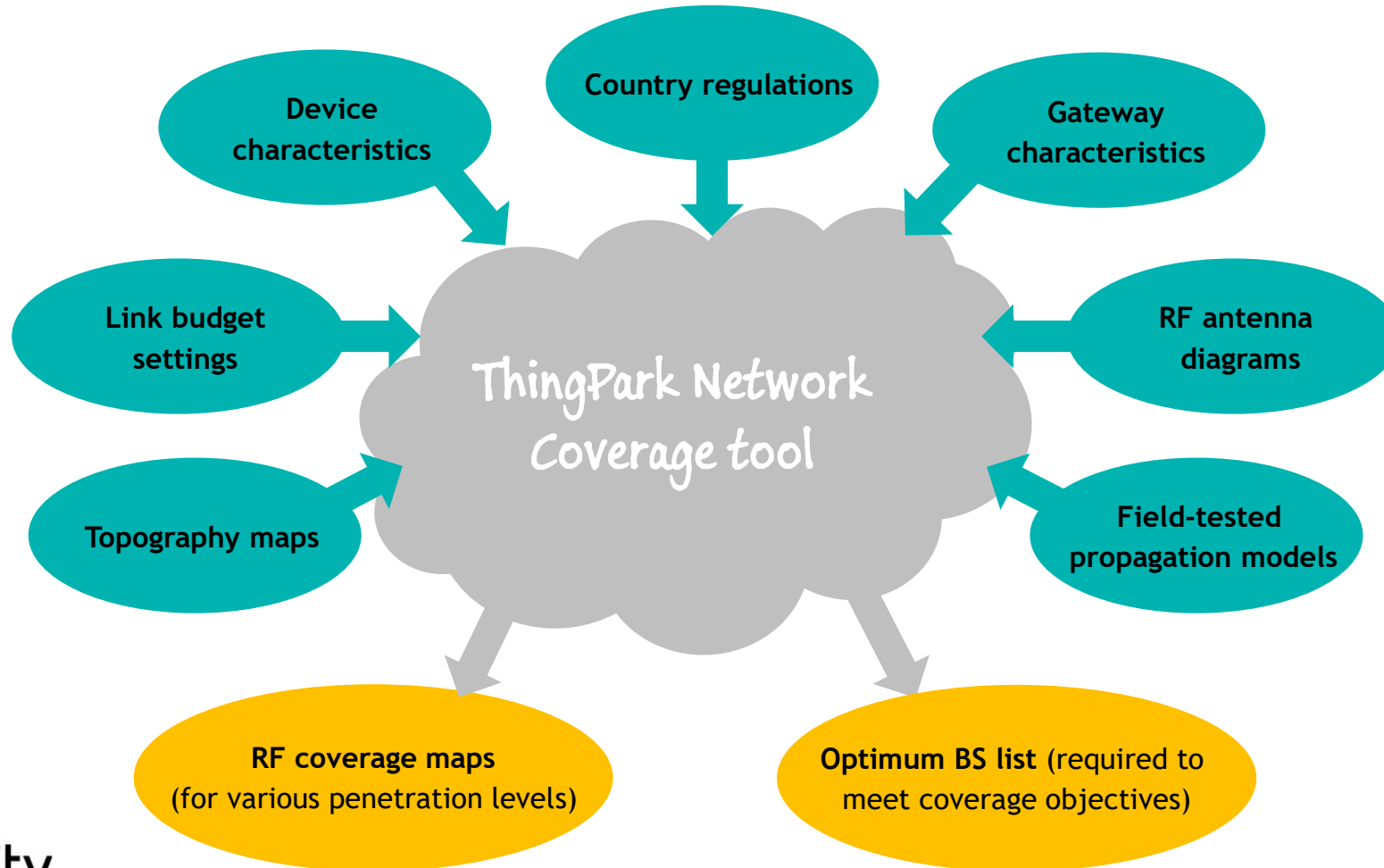
Actility

What is ThingPark's Network Coverage tool?

- In-house RF coverage prediction tool to support radio network planning for **outdoor macro gateways** on rooftops or tower-mount
 - **WARNING** The tool is not suitable for coverage prediction of indoor gateways.
- Seamlessly integrated with ThingPark SaaS
- **Main use cases**
 - Predict RF coverage for greenfield deployments and determine the optimum antenna placement
 - Generate coverage heatmaps for already-deployed gateways, detect potential coverage holes and choose where to add new gateways to cover white spots
 - Automatically select the best gateway locations from a list of candidate high points **New**
 - Inspect the RF coverage status of your device fleet and compare the predicted coverage with the real device KPIs **New**

Inputs & outputs

- Inputs
- Outputs



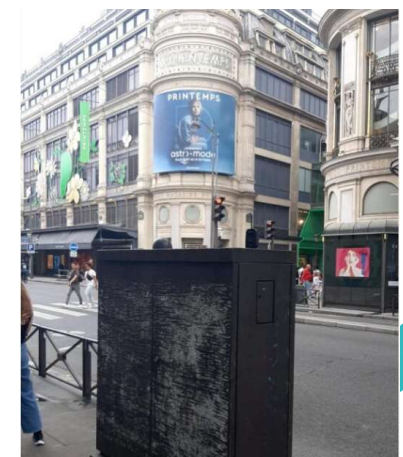
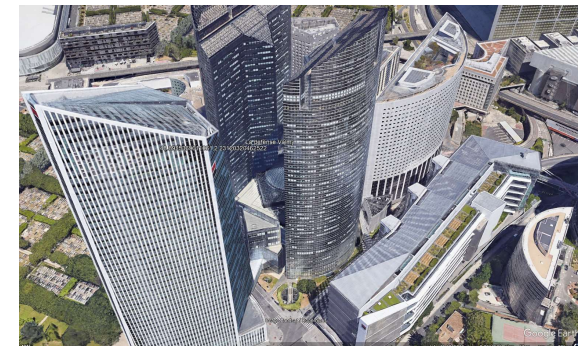
Activity

Comparison with field tests

- 2 propagation models compared with field tests, for 4 different propagation environments (Dense Urban, Urban, Suburban and Rural)
 - Hata Okumura, with tuned correction factors, provides safe predictions for all environments
 - An alternative propagation model is proposed by the tool, providing realistic results in urban environment and slightly optimistic results for other environments.

	# points	Average delta (safe model)	Average delta (optimistic model)
Dense Urban	94	-0.33 dB	1.75 dB
Urban	133	-0.63 dB	0.87 dB
Suburban	88	-0.64 dB	2.11 dB
Rural	60	0.02 dB	1.86 dB

Actility





TNC Demo

Actility



Try it out

Activity

Try it out now

- Sign-up for a free access to ThingPark Community
<https://community.thingpark.org/index.php/sign-up-tpcp/> or scan this QR code:
- Buy credit on ThingPark Market
<https://market.thingpark.com/actility-thingpark-s-network-coverage-credits.html> or scan this QR code:
- Checkout the tool's user guide:
<https://docs.thingpark.com/thingpark-enterprise/latest/docs/user-guide/network-tools/network-coverage/> or scan this QR code:





Q&A

Actility

Thank you



Activity